

Build your dreams, go confidently in the direction of your dreams,
live the life you have imagined.



Company Profile

ZHONG JIAN STEEL STRUCTURE CO. LTD. is a professional company specialized in R&D, design, production, sales, installation, leasing, and recycling of light steel combined house. Devoting itself to the innovations of new products, the company encourages the design and application of light steel house. In addition, there is a skillful, experienced and dedicated professional team. Due to its superior product quality, good after-sale service and reasonable price, ZHONG JIAN has gained a trustful reputation among customers, as well with business around the whole country.

ZHONG JIAN will continue to surpass itself with a firm belief and accept new market challenges. We will adhere to the concept of respecting the talents, perfecting the system, improving product quality, providing brand service for achieving industrial modernization, large-scale enterprise development, and first-class technology, and providing our customers with quality products and perfect services.

ZHONG JIAN always upholds "honesty and excellence" as the enterprise soul, seeking common development with customers.

Product Features

Standardized design, plant production, large-scale combination, detachable movement, repeated use, composite parts are easy for batch inventory. It is a kind of light steel house characterized with safe, energy-saved, environmental friendly, beautiful, economical, simple and efficient.



ADVANTAGE

**The components can be assembled side by side or can be up and down.
The maximum is three floors. The floor areas can be as big as you want**

- 1.Low cost**
- 2.Good in heat insulation. There's a 10 degree Celsius difference inside and outside.**
- 3.Can be customized and it's easy to assemble**
- 4.Can resist the #3- #4 Typhoon**
- 5.Can resist the earthquake with magnitude 7**
- 6.Recycle and durable**
- 7.Easy to transport**
- 8.Have multiple purpose, you can change it to any form you want.**

Base on the customer request, it can be used as office, residential house, cafeteria, dorm, shops, restaurant or coffee shops. And combined with large space, like construction barracks, field operation camps, and hotel.



LIVING

It requires only minimal space. No more geographic restriction, we can prefab the house into as many rooms as you want.

Flexibility on utilize the room / First floor can be use as living room, dining room or workshop, second floor can be use as bed room and have a balcony for you to plant some flowers. You can even your friend come to have a cup of tea during holidays. All the design is possible

Better view Have a better view on a higher location. Viewing scenery at daytime and viewing stars during the night. View the beautiful scenery anytime you want, isn't it sounds relaxing.

As many styles as you want We can prefab your house into any style you want it to be. From single floor condo to two floors town house are all possible.

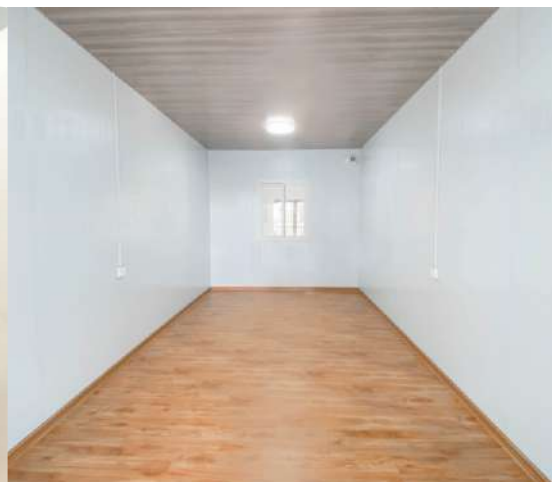
We can make the Square Keel Straight Ladder either in indoor or outdoor. This kind of design is not only ergonomic but also give you a feel that you're in an outdoor tree house.

- **We have a professional team to help you assemble and with warranty.**
- **Highly customized modules**
- **The price is very reasonable**



PREFAB CONTAINER HOUSE STANDARD

LENGTH	5.95 meters
WIDTH	3.00 meters
HEIGHT	2.95 meters
LIVE LOAD	150 kg/sqm
ROOF LOAD	50 kg/sqm
STACKABILITY	up to 3 storey



PREFAB VILLA



FINISHED PROJECTS

We complete many large projects, so we are well-equipped for the more important ones. That means taking small companies like ours to the next level. We do this by building a winning product, delivering it with the best resources, and providing world-class customer support.

Our company is ideally suited for both small and large-scale projects.

We are committed to providing the best quality of products and services, with a systematic approach, when it comes to the construction industry. Our mission is not only to play a role in helping our customers achieve maximum value but also to provide them with excellent service through the entire project process.

We are happy to be ready to offer you a quality product with every detail in place. Our high-quality containers are delivered fully functional and ready for use

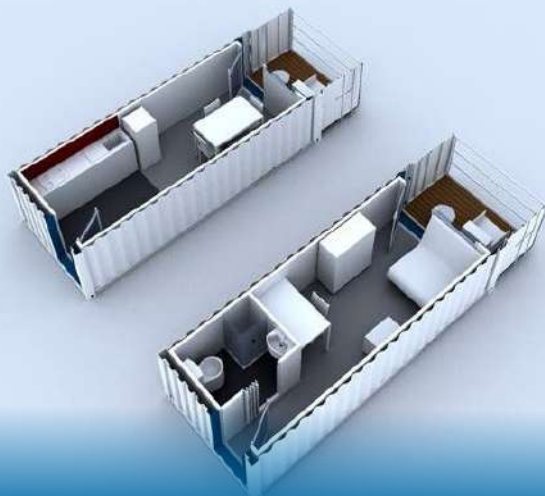
These containers are built by skilled craftsmen with top-quality used materials. We use high-quality standards to ensure the most durable and quality building blocks in the world.



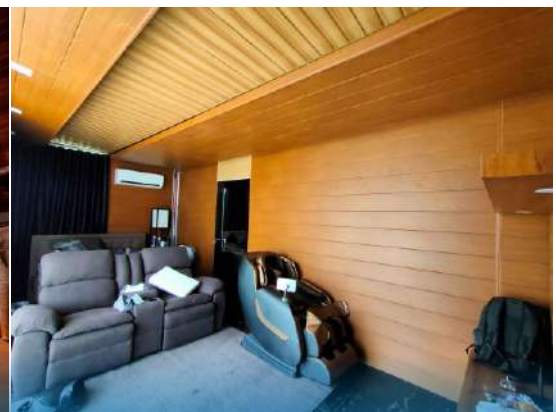




PREFAB LIVING



Yexel Sebastian's House











BUSINESS & INVEST

- Prefab house is highly customized
- Prefab house can resist the earthquake and typhoon.
- The exterior wall of the prefab house is heat insulation.
- Easy to be dismantled and assembly

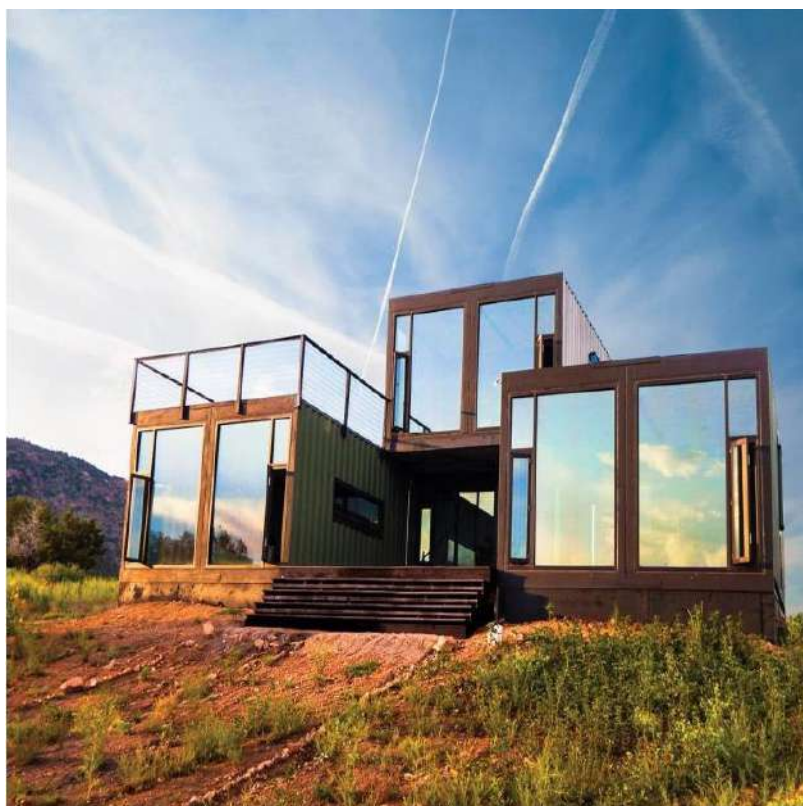
Prefab house can be your own house and office, also can made security booth, meeting room, lounge, restaurant, dorm, villa , storage room, hospital...etc

There are many ways to utilize the space

Connect the frames making the indoor area are more spacious. There's stairs inside and outside the room for going to the balcony to viewing the scenery. There's eaves and rooftops to cover the rains and suns for you. The location and the style of the house can be fully flexible. These are the biggest advantages of the prefab house. The materials of the rooftop, walls and floors are all carefully chosen. They can prevent the fire and isolate the heat. There are so many different models for you to choose and can be prefabbing into the style you want.



PREFAB HOTELS



PREFAB APARTMENT



Sampaloc, Manila



PREFAB STORES





PREFAB AIR BNB





PREFAB RESTAURANT



PREFAB OFFICE



PREFAB HOSPITAL



◉ Quezon Institute
◉ Lung Center of the Philippines

◉ National Kidney Transplant Institute
◉ National Center for Mental Health Mandaluyong



PORTABLE BARRACK

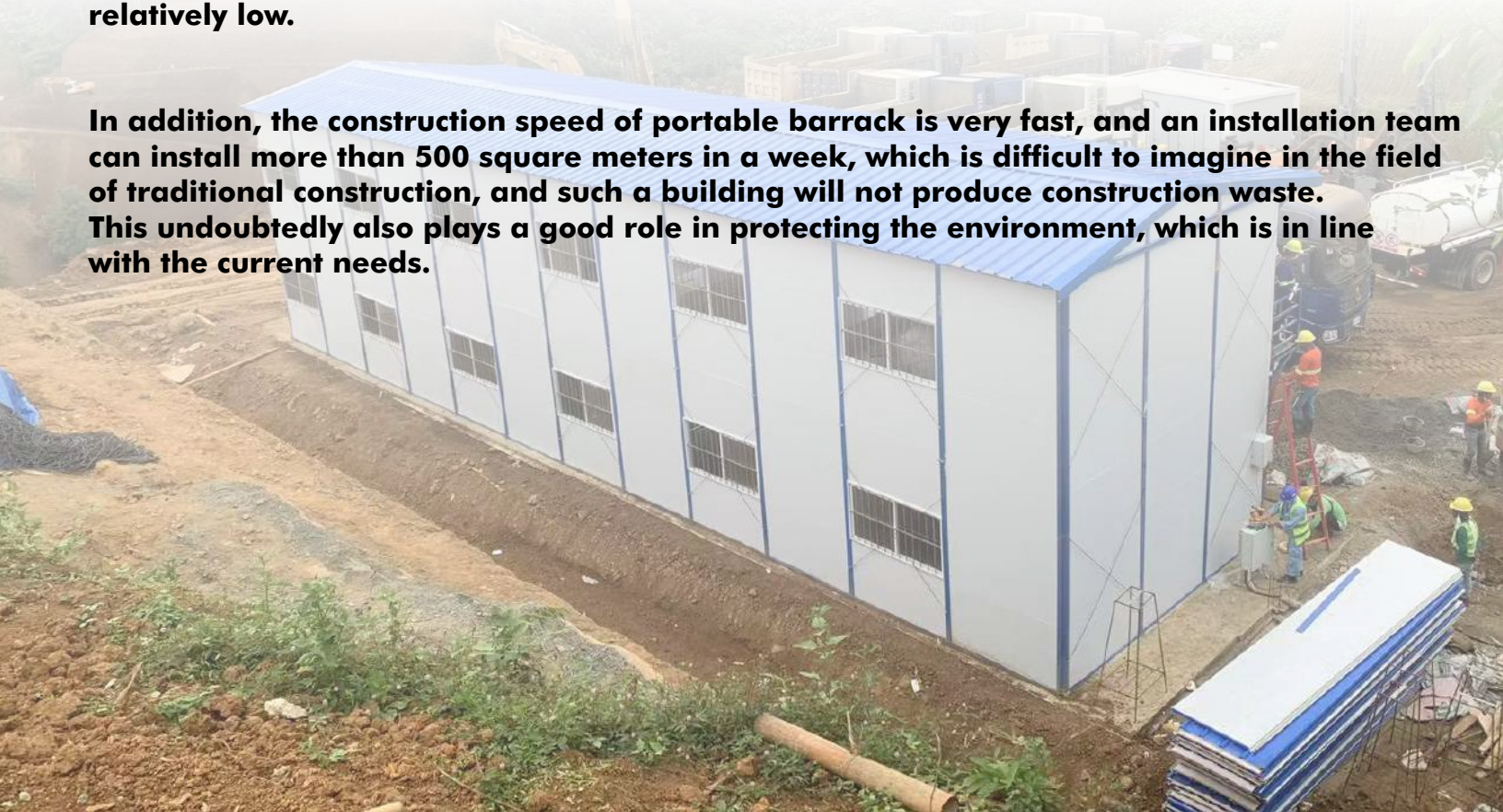
More bigger space, more lower cost

Portable barrack is a kind of environment-friendly and economical portable barrack with light steel as skeleton, sandwich panel as enclosure material, space combination by standard modulus series, and bolted connection of components. It can be assembled and disassembled conveniently and quickly, realizes the general standardization of temporary buildings, establishes the concept of environmental protection, energy saving, fast and efficient construction, and makes temporary houses enter a series of development, integrated production, supporting supply, inventory and availability. Areas of styling products used in multiple turnovers.

First of all, the prefab house is a new type of light steel composite panel house, under the reasonable combination of material and steel structure. It can achieve a very good safety effect. The specific data is the resistance of strong earthquakes above 7 and 12 typhoons, which is difficult for ordinary houses to achieve. Therefore, it is widely used in some earthquake-stricken areas.

Secondly, the cost of the portable barrack is low. Due to some characteristics of the portable barrack, compared with some brick houses, its cost is very low, and it can be recycled and has a long service life. According to statistics, Generally, a prefab can be reused more than six times, and from these data, we can understand that the overall cost of a prefab is relatively low.

In addition, the construction speed of portable barrack is very fast, and an installation team can install more than 500 square meters in a week, which is difficult to imagine in the field of traditional construction, and such a building will not produce construction waste. This undoubtedly also plays a good role in protecting the environment, which is in line with the current needs.



PREFAB BARRACKS



Nueva Ecija, Philippines



PREFAB PORTALET



PREFAB GUARD HOUSE



Cagayan



Steel Structure
WAREHOUSE



PREFAB BUILDING



LUXURY PREFAB CAPSULE



SPARKHUB



LIGHT STEEL



LIGHT STEEL

Advantage of steel structure building

1. Light weight, high strength steel frame warehouse.
2. Safe and reliable, wind and earthquake resistant.
3. Steel structure plant in good quality and reliability, accurate size, easy to install.
4. Steel structure materials can be recycled, and environmental pollution can be reduced when steel building dismantled.
5. Manufacturing aspect: steel frame building is simple, construction period is short, components are prefabricated in the factory, the site only need assemble as per construction drawings, greatly shorten the construction time.
6. Performance: steel workshop is durable, easy to repair, only simple maintenance.
7. Appearance: steel structure warehouse building design is beautiful and practical, with simple and smooth lines. Colorful wall panels are available in a variety of colors, and the walls can also be made of other materials, which is more Flexible.
8. Economic aspects: the cost of steel structure workshop is reasonable, light weight, reduce the cost of foundation, Fast construction, comprehensive economic benefits are greatly better than the concrete building. Quick investment return and eco-friendly.



Steel Structure **LIBRARY**





📍 Office and Showroom Location

Block 10 Lot 20 Golden Sun 999
Industrial Park San Pablo (Propio)
San Simon, Pampanga.

Contact us

0917-177-7888



WeChat ID ZJ-1777888

Welcome **SCAN** the QR Code and
add us to WeChat for more details


After-sales service

0917-166-6777


SOCIAL MEDIA AND BUSINESS ACCOUNT

FOLLOW US   

 facebook.com/ZJGJG

 zhongjianq2018@gmail.com

 [zhongjian2018](https://www.instagram.com/zhongjian2018)

 [zhongjian2018](https://www.tiktok.com/zhongjian2018)

